

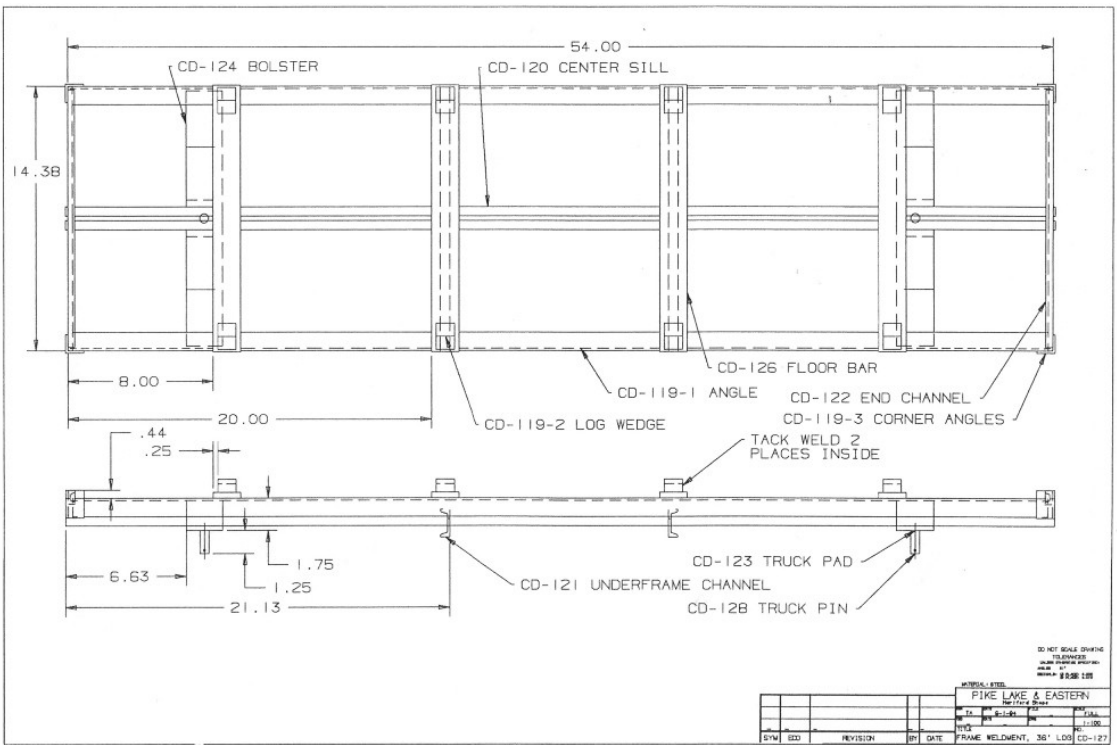
Large Scale Model Railway Engineering

As promised last month, this month we will begin presenting drawings for the 36 foot logging flats. The drawings for the parts made out of angle and channel are included to be followed next month be the parts made from flat bar. Some of these parts will also be used on future cars so even if you are not building these flats hang on to the drawings, you may need them later.

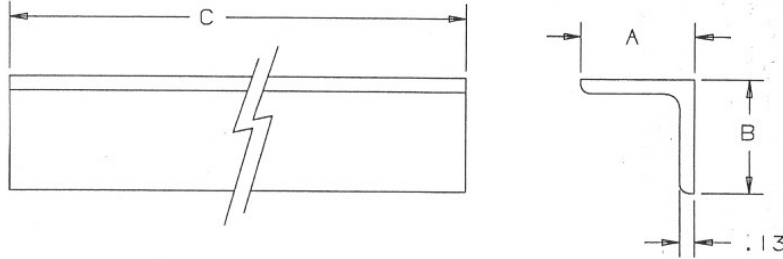
The parts shown, can be cut to length on a cutoff saw (or with a hacksaw) and simply deburred to remove the sharp edges. Parts CD-121 and CD-122 have notches cut or milled in the center so that they will eventually fit around the center sill of the car. The center sills are so arranged that the coupler assemblies that we described last month will slide nicely inside as will be seen next month when we show the car assembly.

Floors of the car is constructed out of $1/4 \times 1\ 1/2$ strips sawed from pressure treated two by fours. Four 4-40 machine screws are used to hold each board in place. If one was lazy pieces of grooved plywood could be used but that just does not give the same affect as individual boards. More on this next month.

In the July newsletter I will show how to make the fixtures for mass producing the grab irons and stirrups for these and the other cars to follow.



PAR NO	USAGE	A DIM	B DIM	C DIM	REQD
CD-119-1	CAR SIDES	1.00	1.00	53.50	2
CD-119-2	LOG WEDGES	1.00	1.00	1.00	8
CD-119-3	CAR CORNERS	1.00	1.00	1.50	4
-	-	-	-	-	-



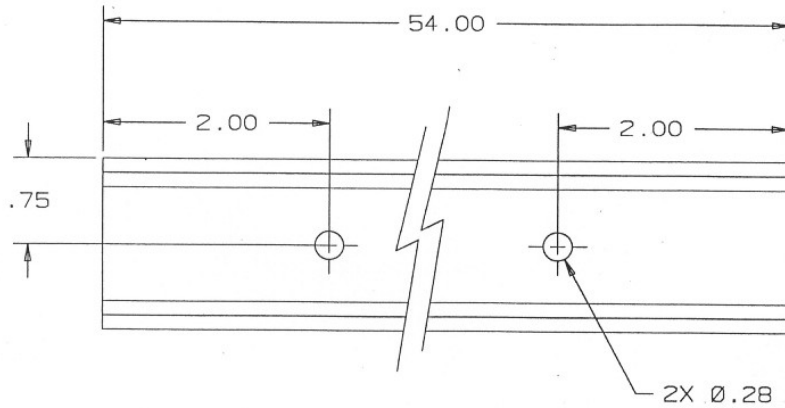
SAW SQUARE AND DEBURR

DO NOT SCALE DRAWING
TOLERANCES
UNLESS OTHERWISE SPECIFIED:
ANGLES ±1°
DECIMALS: (3 PLACE) ±.005
(2 PLACE) ±.015

MATERIAL: 1/8 ANGLE

PIKE LAKE & EASTERN
Hartford Shops

					OWN	TA	DATE	5-1-94	FILE	SCALE	1
					OKD		DATE		DWG		1-100
					TITLE						NO.
					ANGLE, 36 FOOT LOG						CD-119
					SYM	ECO	REVISION	BY	DATE		



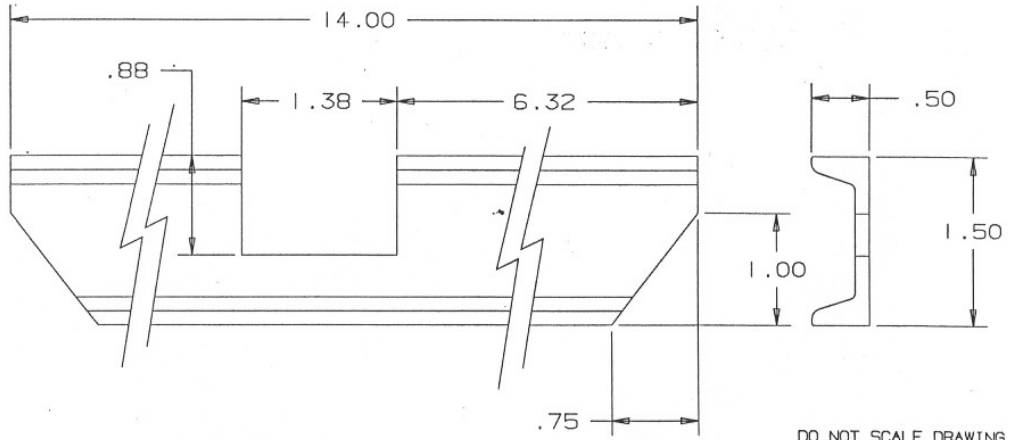
SAW SQUARE AND DEBURR

DO NOT SCALE DRAWING
 TOLERANCES
 UNLESS OTHERWISE SPECIFIED:
 ANGLES 41°
 DECIMALS: (3 PLACE) ±.005
 (2 PLACE) ±.015

MATERIAL: 1 1/2 X 1/2 X 1/8 STEEL CHANNEL

SYM	ECO	REVISION	BY	DATE

PIKE LAKE & EASTERN Hartford Shops			
DRN	TA	DATE	SCALE
		5-1-94	1
CKD		DATE	DWG
			1-100
TITLE			NO.
CHANNEL, CENTER SILL			CD-120



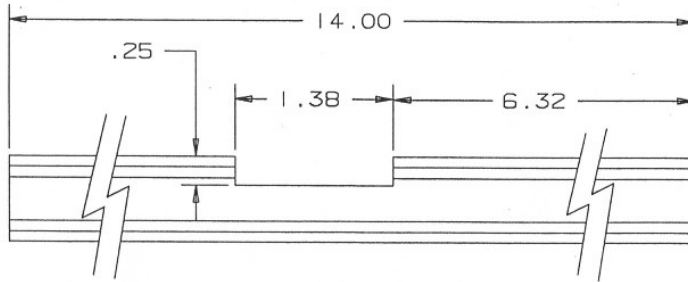
SAW SQUARE AND DEBURR

DO NOT SCALE DRAWING
TOLERANCES
UNLESS OTHERWISE SPECIFIED:
ANGLES ±1°
DECIMALS: (3 PLACE) ±.005
(2 PLACE) ±.015

MATERIAL: 1 1/2 X 1/2 X 1/8 STEEL CHANNEL

PIKE LAKE & EASTERN
Hartford Shops

					DRN	TA	DATE	5-1-94	FILE	SCALE	1
					CKD		DATE		DWG		1-100
					TITLE						NO.
					CHANNEL, UNDER FRAME						CD-121
					SYM	ECO	REVISION	BY	DATE		



SAW SQUARE AND DEBURR

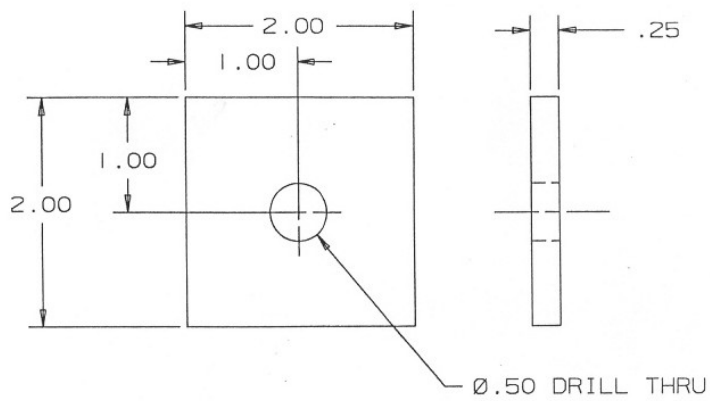
DO NOT SCALE DRAWING
 TOLERANCES
 UNLESS OTHERWISE SPECIFIED:
 ANGLES ±1°
 DECIMALS: (3 PLACE) ±.005
 (2 PLACE) ±.015

MATERIAL: 3/4 X 3/8 X 1/8 STEEL CHANNEL

PIKE LAKE & EASTERN
 Hartford Shops

SYM	ECO	REVISION	BY	DATE

DWN	TA	DATE	5-1-94	FILE		SCALE	1
CKD		DATE		DWG			1-100
TITLE							NO.
CHANNEL, END SILL							CD-122



SAW SQUARE AND DEBURR

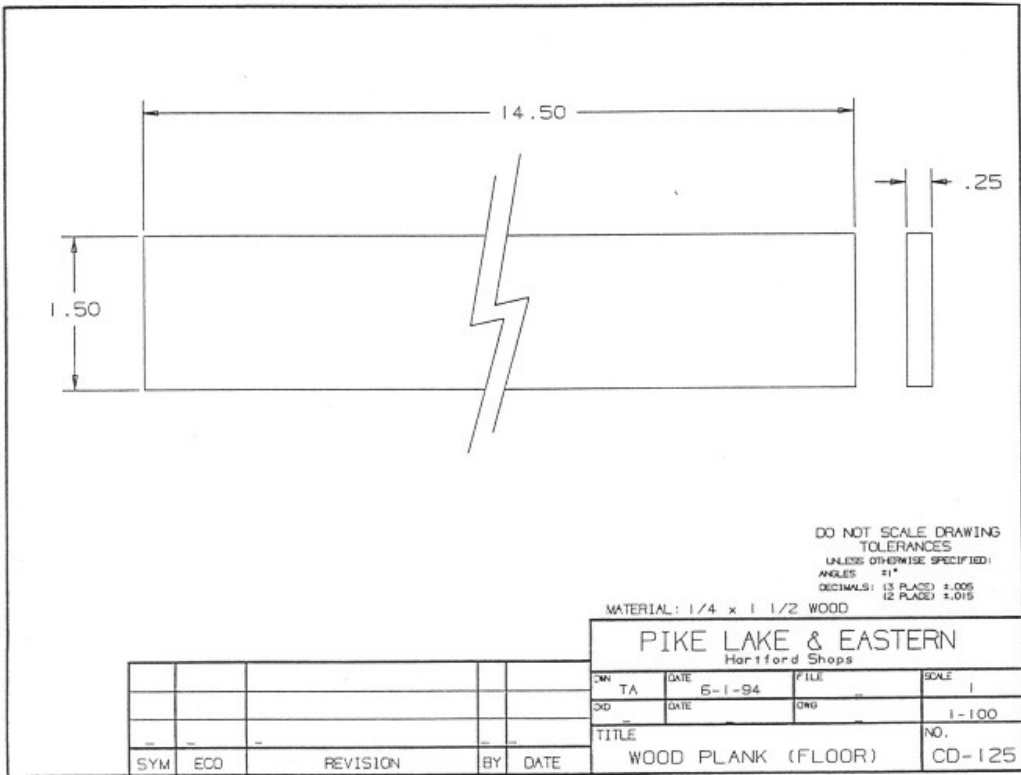
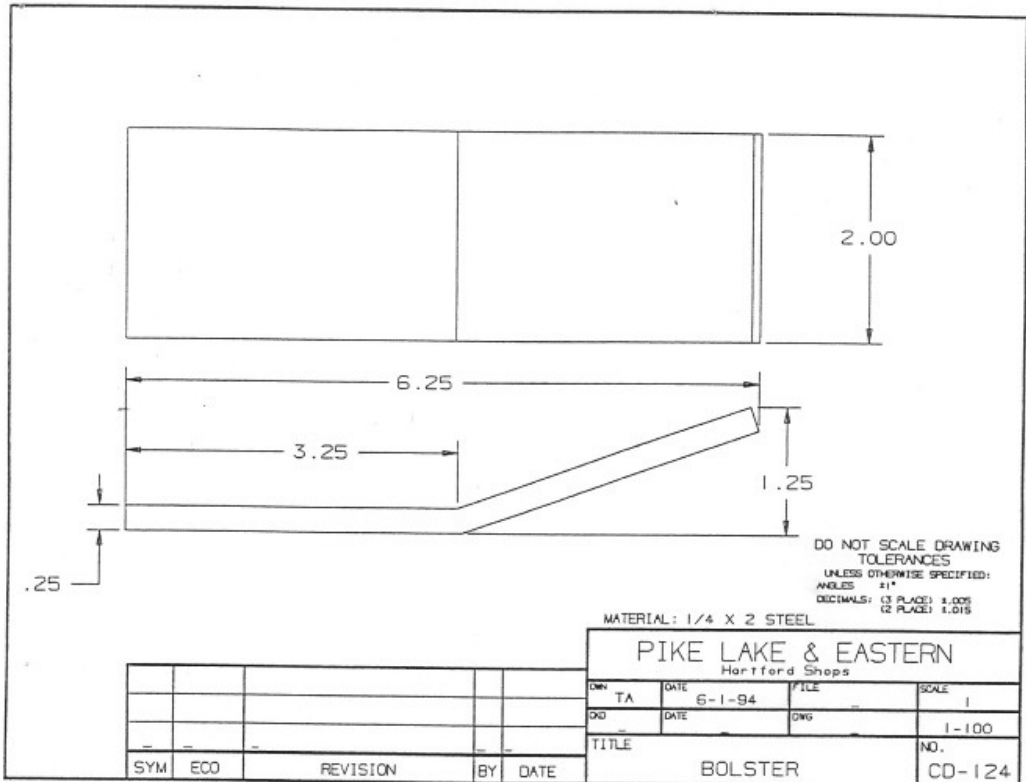
DO NOT SCALE DRAWING
 TOLERANCES
 UNLESS OTHERWISE SPECIFIED:
 ANGLES ±1°
 DECIMALS: (3 PLACE) ±.005
 (2 PLACE) ±.015

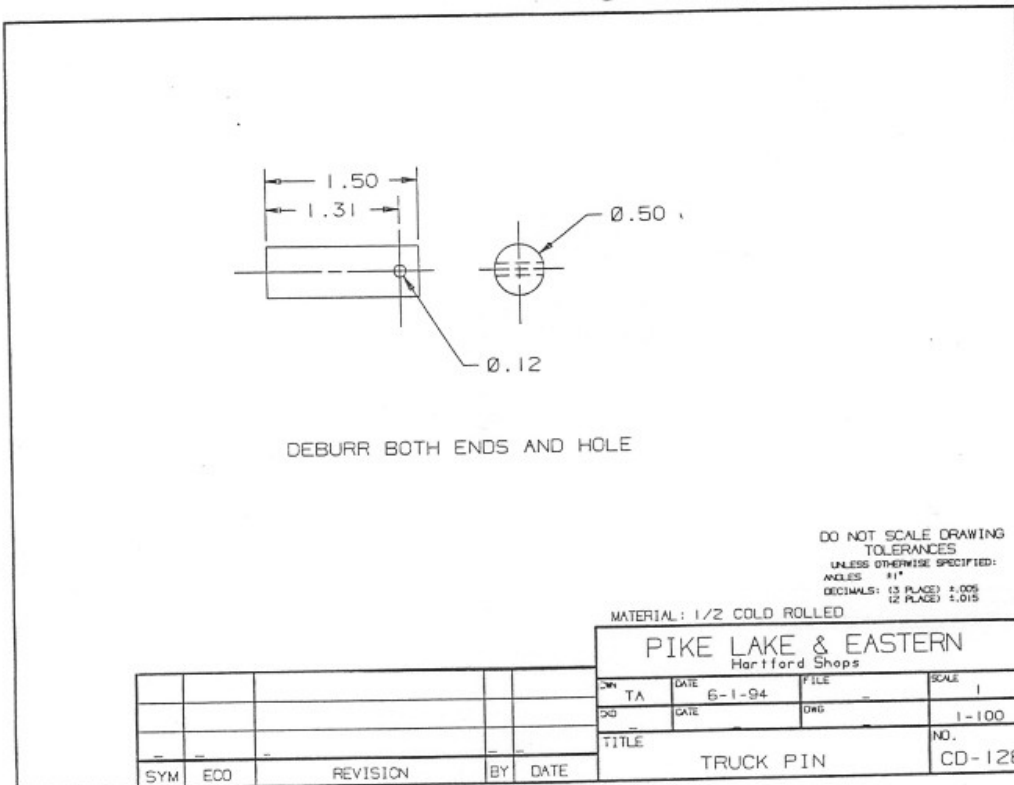
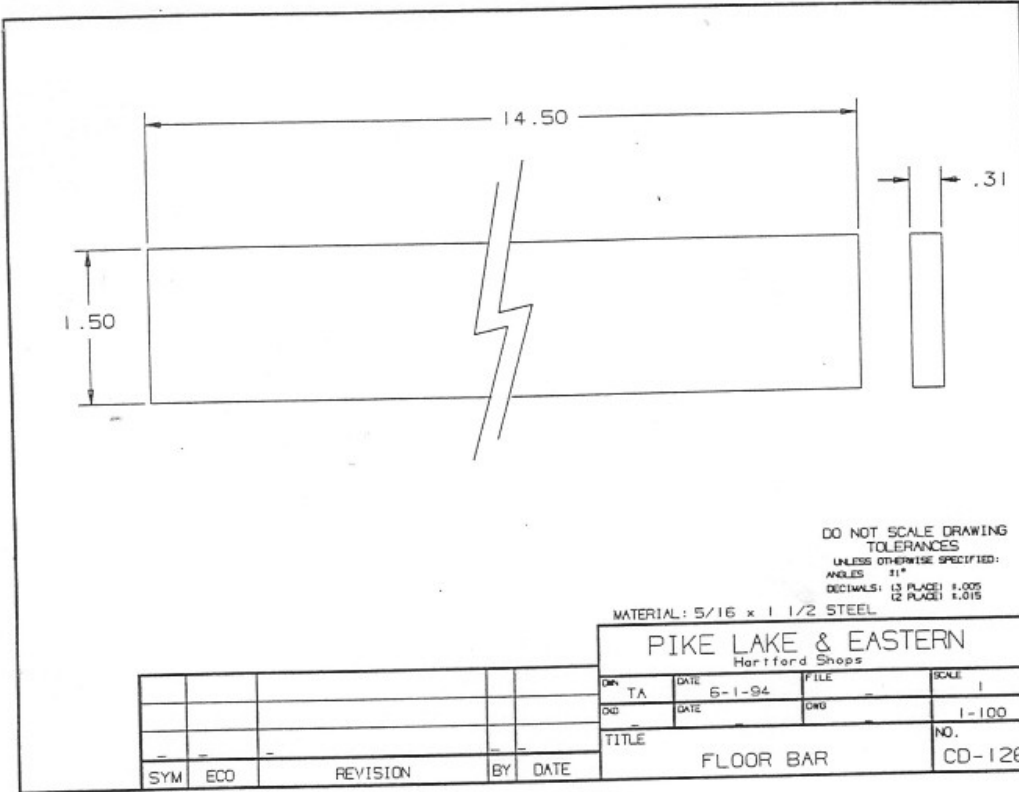
MATERIAL: 1/4 X 2 HR FLAT

PIKE LAKE & EASTERN
 Hartford Shops

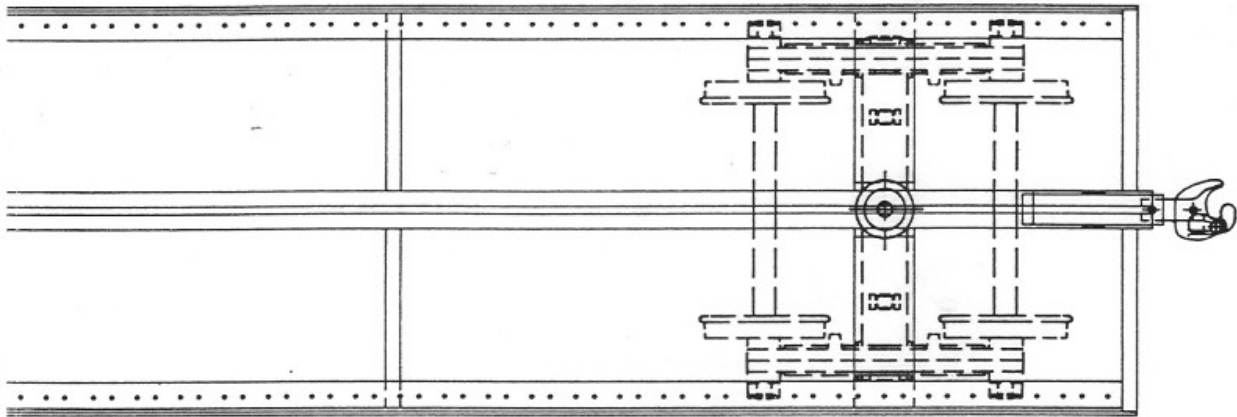
SYM	ECJ	REVISION	BY	DATE

OWN	TA	DATE	5-1-94	FILE		SCALE	1
ORD		DATE		DWG			1-100
TITLE							NO.
PAD, TRUCK							CD-123

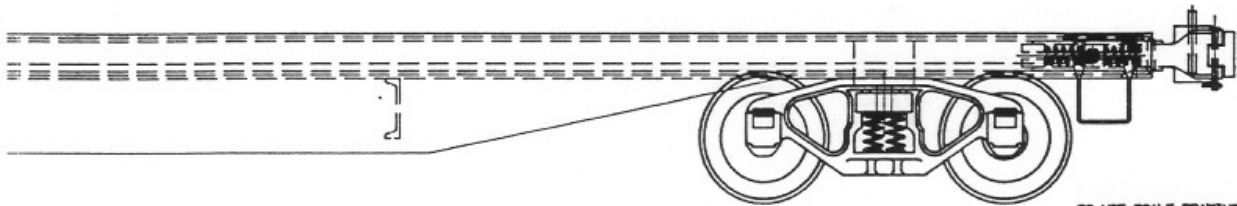




SCREW, LOCKWASHER, NUT
 BLY



CD. 53 FRAME WELDMENT

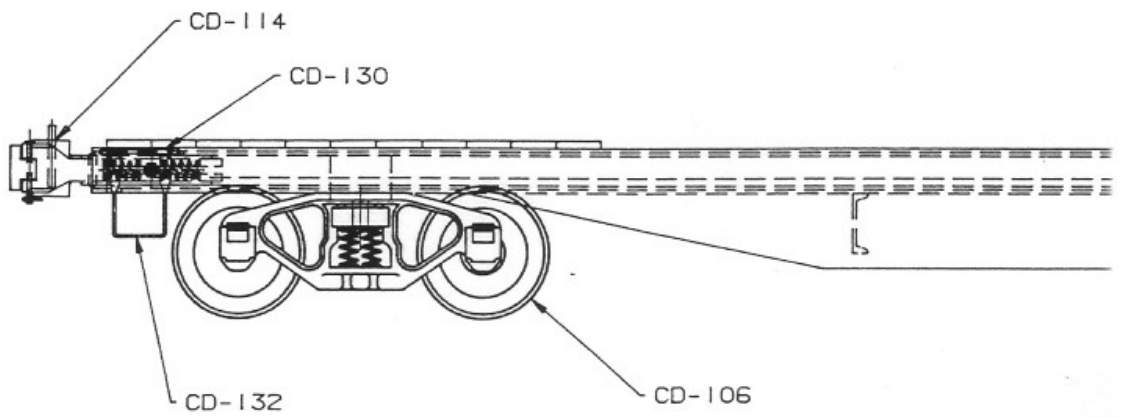
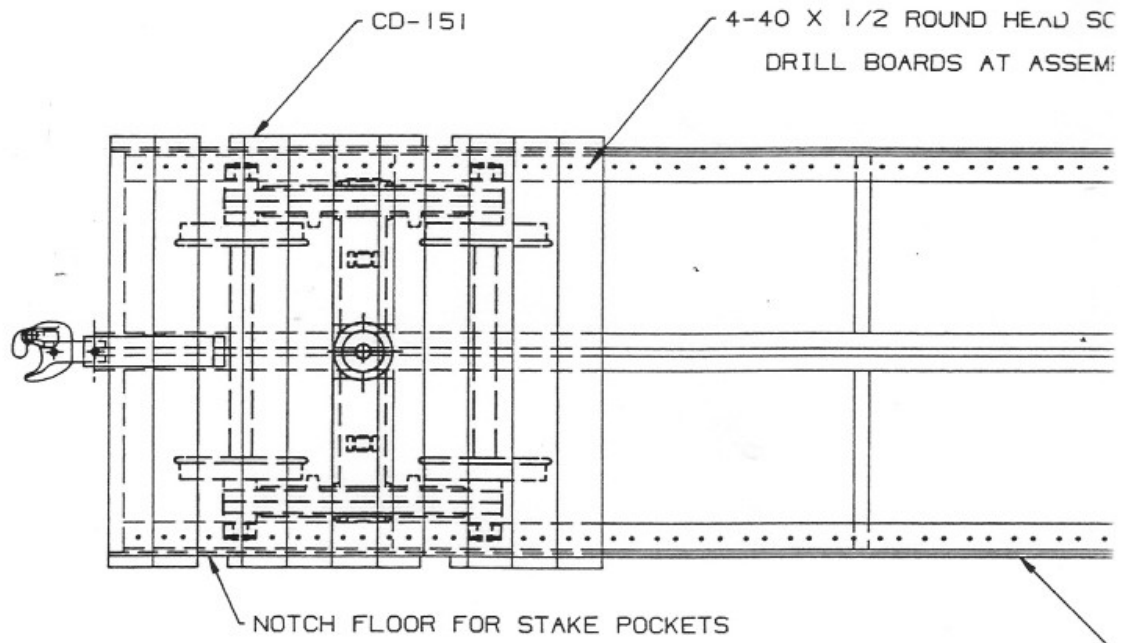


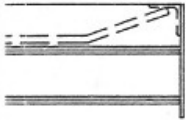
DO NOT SCALE DRAWING
 TOLERANCES
 UNLESS OTHERWISE SPECIFIED:
 FINISH .015"
 DIMENSIONS TO FACE UNLESS
 OTHERWISE SPECIFIED

MATERIAL:

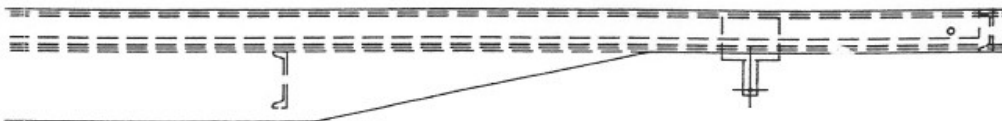
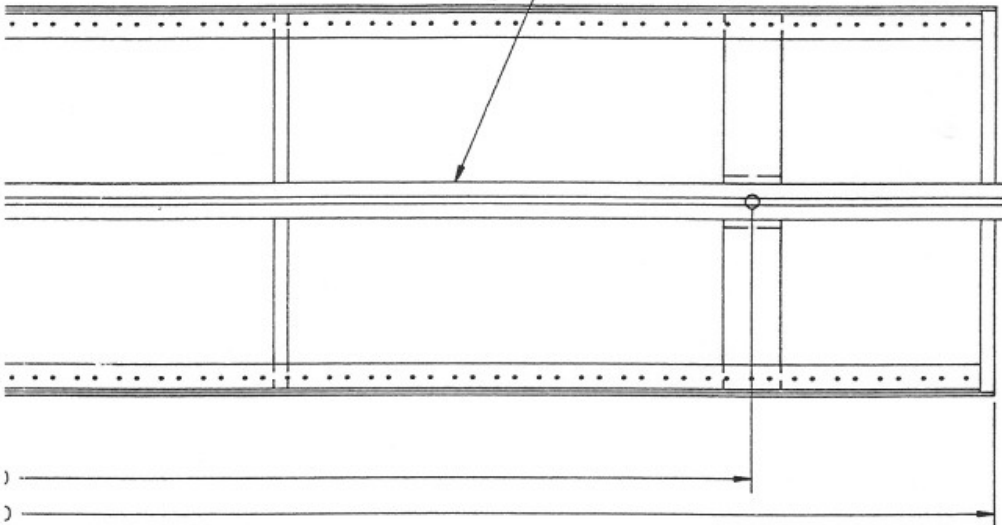
PIKE LAKE & EASTERN Hartford Shops			
DESIGN	DATE	FILE	SCALE
TA	12-30-94		N.S.
CD			1-100
TITLE			NO.
FLAT CAR			CD-154

SYM	EDD	REVISION	BY	DATE





CD-146

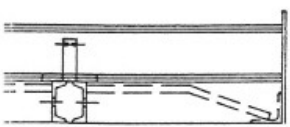
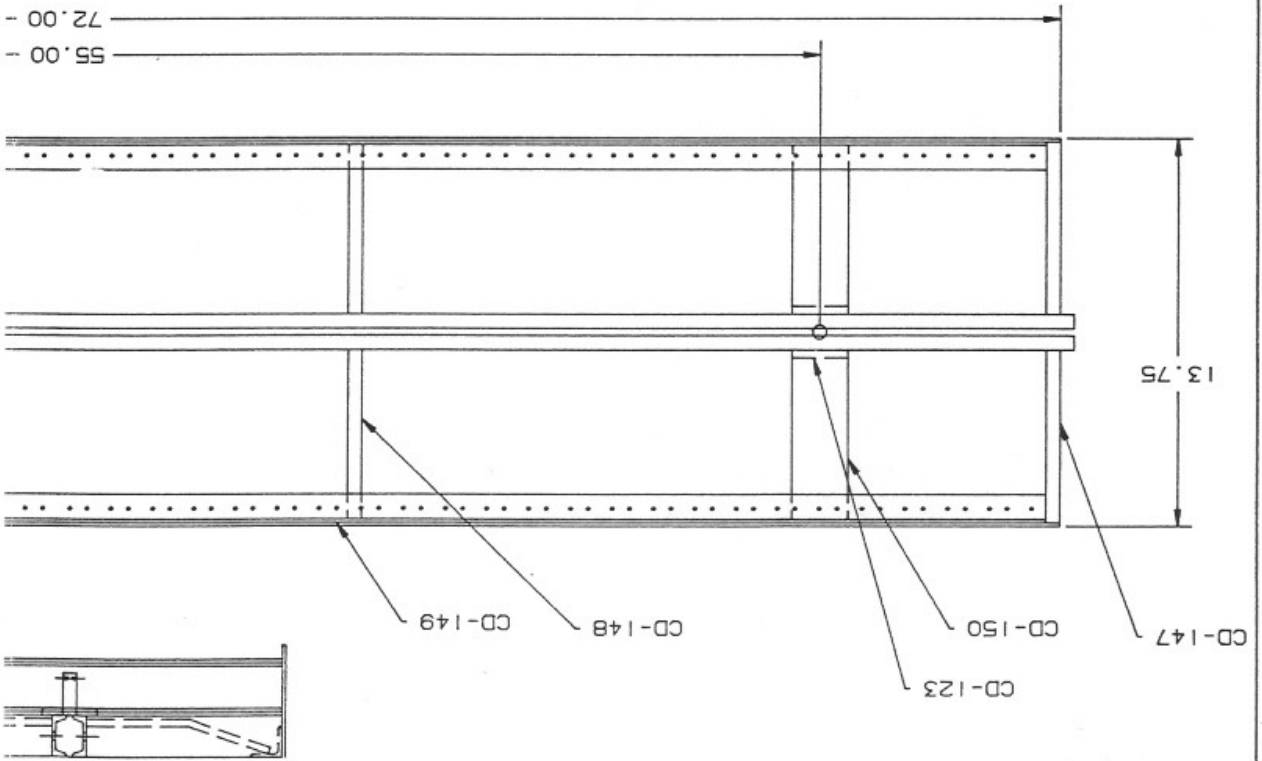
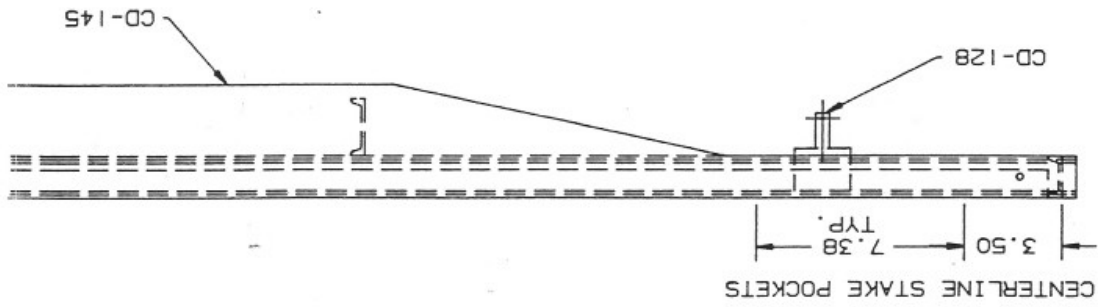


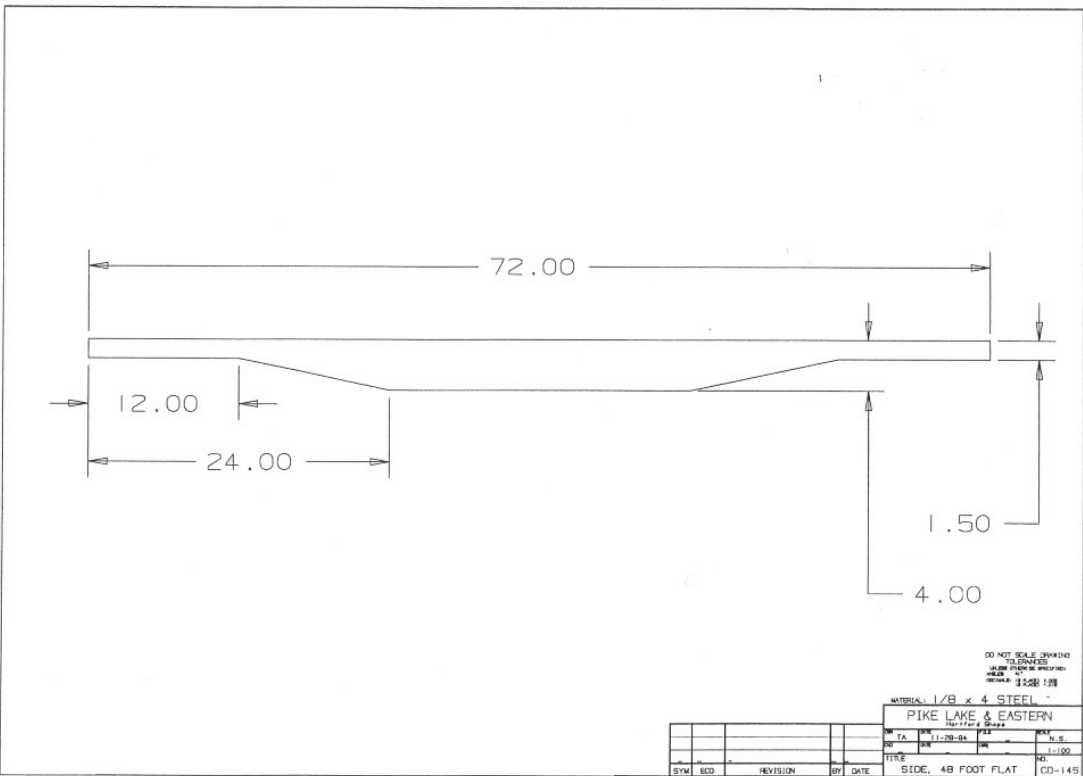
DO NOT SCALE DRAWING
 TOLERANCES
 UNLESS OTHERWISE SPECIFIED
 ANGLES 90°
 DECIMALS 2 PLACES 2.000

MATERIAL:

PIKE LAKE & EASTERN			
Hartford Shaps			
DR	TA	DATE	NO.
		12-30-84	N.S.
CD			1-100
TITLE			NO.
FRAME WELDMENT, FLAT			CD-153

SYM	ECO	REVISION	BY	DATE

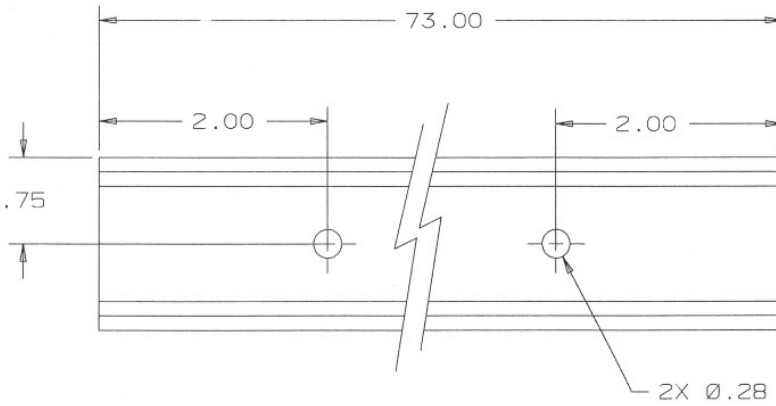




DO NOT SCALE DRAWING
 ALL DIMENSIONS
 UNLESS OTHERWISE SPECIFIED
 SHALL BE IN FEET

MATERIAL: 1/8" x 4" STEEL
 PIKE LAKE & EASTERN

SYN	NO	REVISION	BY	DATE	TITLE	NO.
					SIDE, 48 FOOT FLAT	CD-145



SAW SQUARE AND DEBURR

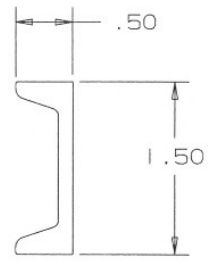
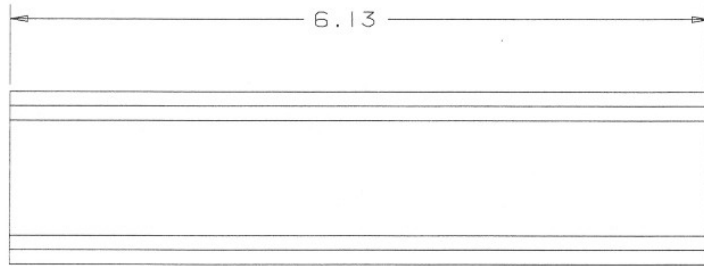
DO NOT SCALE DRAWING
 TOLERANCES
 UNLESS OTHERWISE SPECIFIED:
 ANGLES: ±1°
 DECIMALS: (3 PLACE) ±.005
 (2 PLACE) ±.015

MATERIAL: 1 1/2 X 1/2 X 1/8 STEEL CHANNEL

PIKE LAKE & EASTERN
 Hartford Shops

SYM	ECO	REVISION	BY	DATE

DWN	TA	DATE	11-28-94	FILE		SCALE	1
OKD		DATE		DWG			1-100
TITLE						NO.	
CHANNEL, CENTER SILL						CD-146	



SAW SQUARE AND DEBURR

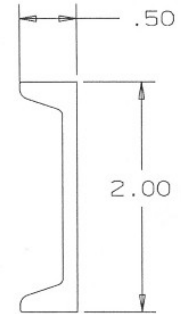
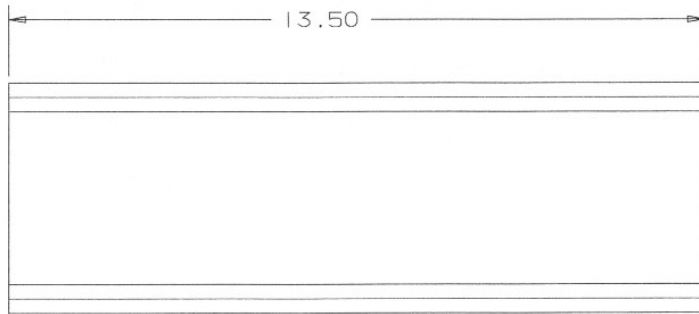
DO NOT SCALE DRAWING
 TOLERANCES
 UNLESS OTHERWISE SPECIFIED:
 ANGLES ±1°
 DECIMALS: (3 PLACE) ±.005
 (2 PLACE) ±.015

MATERIAL: 1 1/2 X 1/2 X 1/8 STEEL CHANNEL

PIKE LAKE & EASTERN
 Hardware Shops

SYM	ECO	REVISION	BY	DATE

DWN	TA	DATE	11-28-94	FILE	SCALE	1
DWG		DATE		DWG		1-100
TITLE						NO.
CHANNEL, END SILL						CD-147



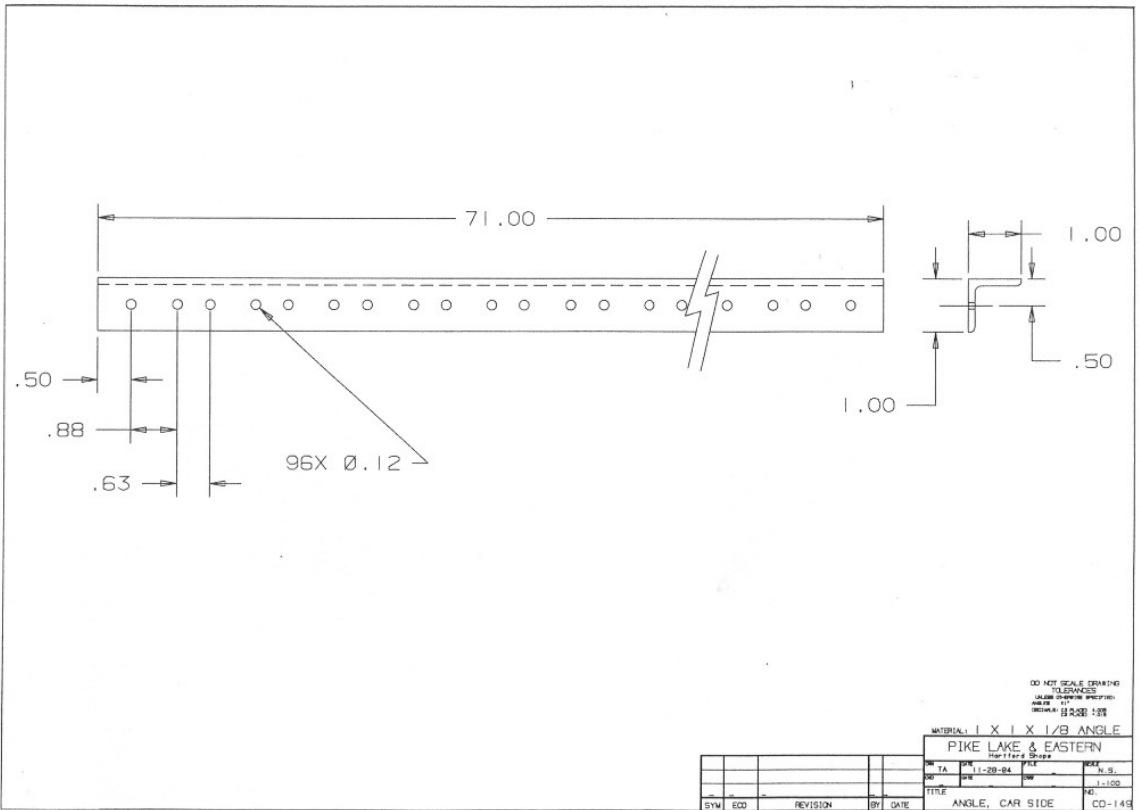
SAW SQUARE AND DEBURR

DO NOT SCALE DRAWING
 TOLERANCES
 UNLESS OTHERWISE SPECIFIED:
 ANGLES ±1°
 DECIMALS: (3 PLACE) ±.005
 (2 PLACE) ±.015

MATERIAL: 2 X 1/2 X 1/8 STEEL CHANNEL

PIKE LAKE & EASTERN
 Hartford Shops

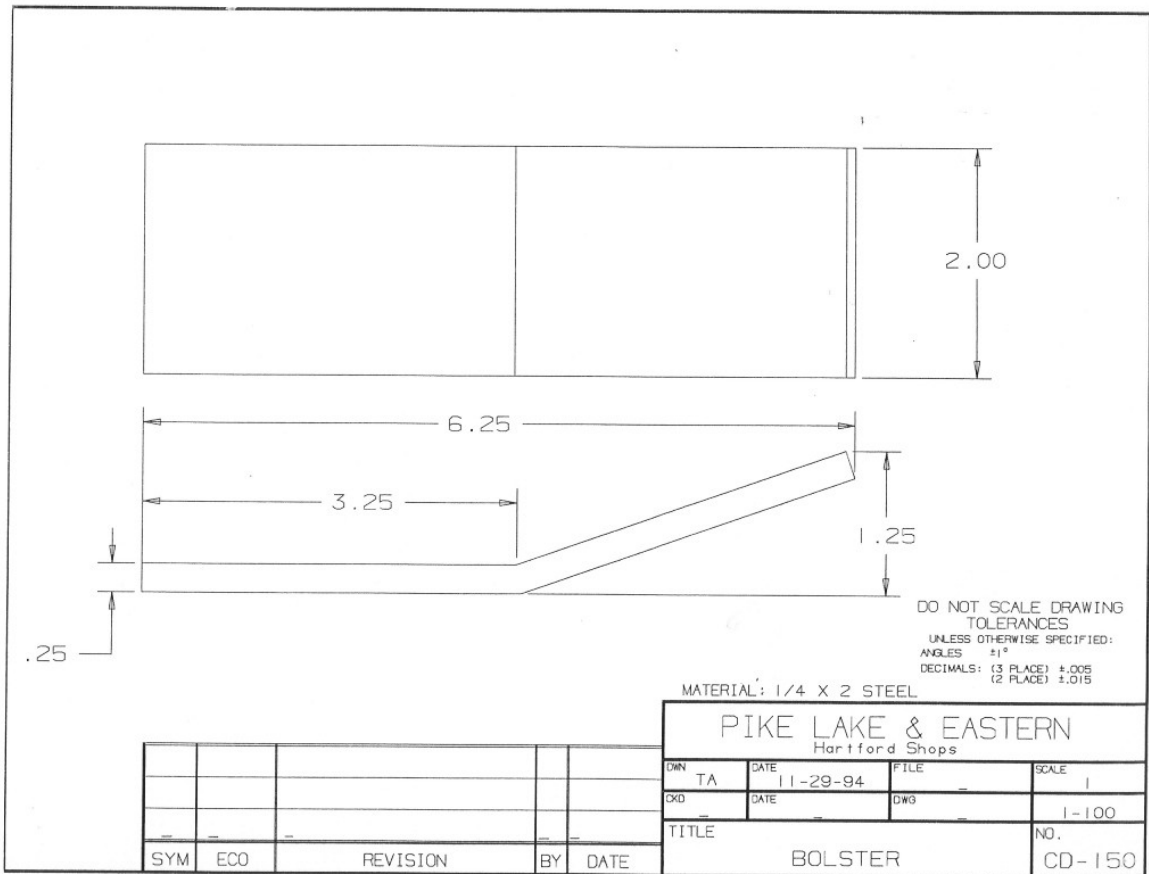
					DWN	TA	DATE	11-28-94	FILE		SCALE	1
					ORD		DATE		DWG			1-100
					TITLE						NO.	
					CHANNEL, INSIDE						CD-148	
					SYM	ECO	REVISION	BY	DATE			

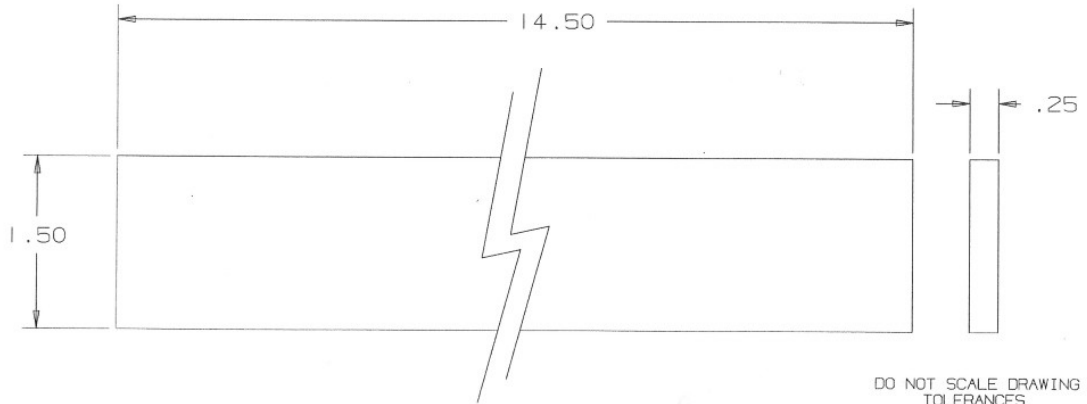


DO NOT SCALE DRAWING
TOLERANCES
UNLESS SPECIFIED OTHERWISE
AS PER ASME Y14.5M-1994

MATERIAL: X 1 X 1/8 ANGLE
PIKE LAKE & EASTERN
FOR FORD 3000

SYN	EDD	REVISION	BY	DATE	DATE	FILE	NO.	U.S.
						1-28-84		1-100
					TITLE		NO.	
					ANGLE, CAR SIDE		CO-149	





DO NOT SCALE DRAWING
 TOLERANCES
 UNLESS OTHERWISE SPECIFIED:
 ANGLES ±1°
 DECIMALS: (3 PLACE) ±.005
 (2 PLACE) ±.015

MATERIAL: 1/4 x 1 1/2 WOOD

PIKE LAKE & EASTERN
 Hartford Shops

SYM	ECO	REVISION	BY	DATE

DWN	TA	DATE	11-19-94	FILE		SCALE	1
				DWG			1-100
TITLE							NO.
WOOD PLANK (FLOOR)							CD-151